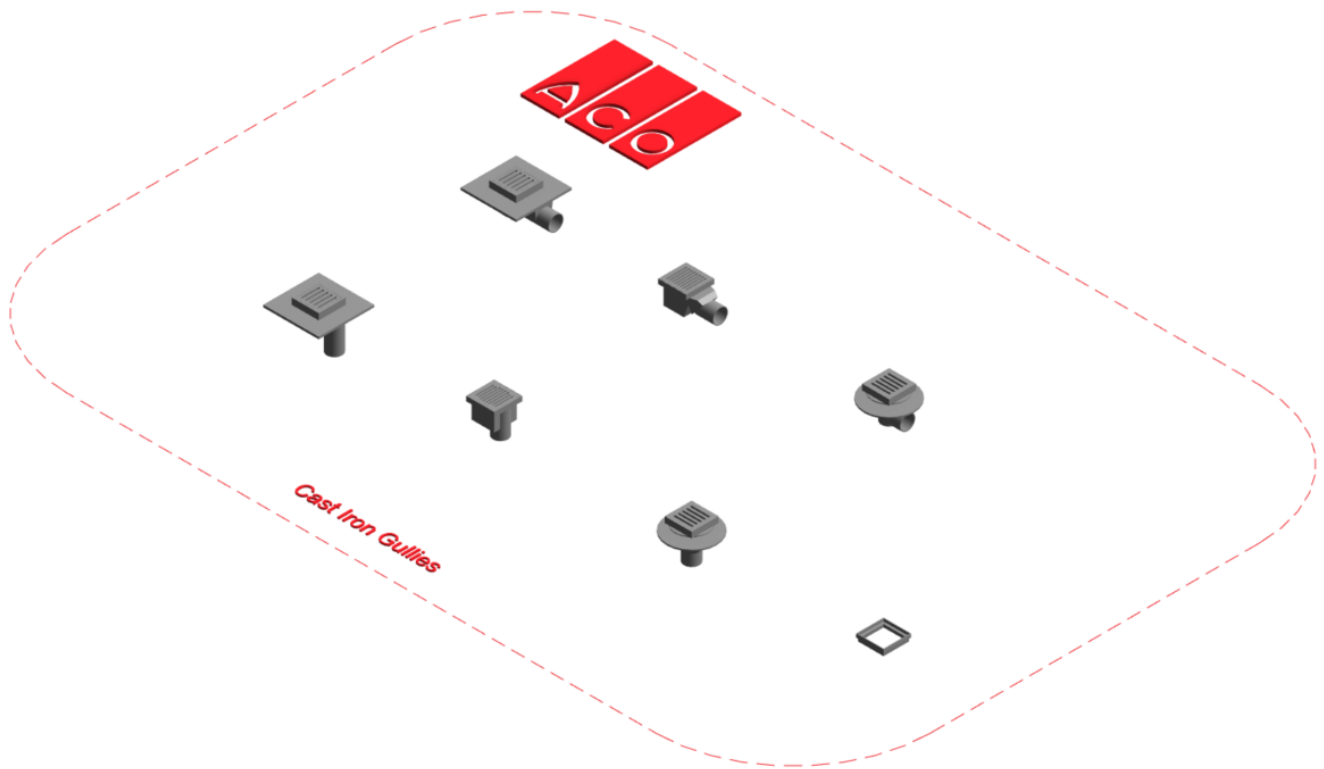


ACO Cast Iron Gullies

User Guide for Autodesk Revit files



Introduction and overview:

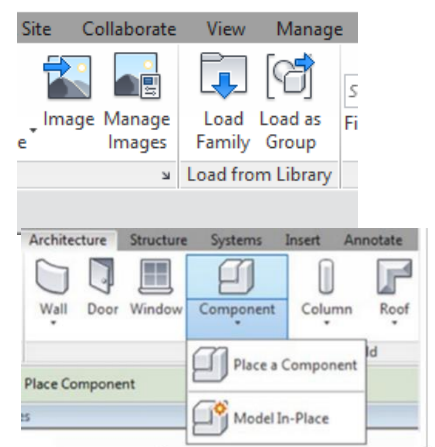
1. There are seven family files created individually for easy usage in Revit project environment.
2. User can select and load each family to the project environment.

File characteristics and contents:

1. All files put together is under 2.5 MB and designed to be user friendly.
2. File is tagged with manufacture's name, specification codes and other relevant information.
3. Bill of materials (schedules) can also be accessed from the project environment.

Loading ACO ESKIS hygiene first into the project:

1. Download the Required Cast Iron Gully Bim Files as needed and save it to a suitable location.
2. Load the families into the project file.
3. Navigate to the "Insert" icon on the Revit ribbon and click "Load Family."
4. The file can now be placed into your project. Navigate to the "Architecture/Component" icons on the Revit ribbon and click "Place a Component."



Placing of families

For PF_ST_UN_305914_Siphon Fonte Telescopique Noir 200x200 vertical DN100_ACO and PF_ST_UN_305915_Siphon Fonte Telescopique Noir 200x200 Horizontal DN100_ACO Gully height adjustment: user have option to adjust the gully height by entering the value between H_min to H_max in Rsen_C_height dialog box.

RSen_C_height	10.0
RSen_C_height_01	42.0
RSen_C_height_02	85.0

Material Library:

The ACO Cast iron gullies files contain materials that are already pre-loaded into the components. When loading the ACO files into your project the pre-loaded materials will automatically transfer through.

Schedules and quantities:

The information such as article number, GTIN data, weight, installation guidelines within the parameters is stored as “shared Parameters” so it can easily appear when creating a schedule and quantities in the project environment.

 		<Cast Iron Gully and accessories>			
A	B	C	D	E	F
n	Description	Articlenumber	Weight	Technical information	Manufacturer
1	SIPHON FONTE REF. 5001.00.00 CADRE 200X200 SORTIE DN100 H	57540	11.00 kg	https://www.aco.fr/	ACO S.A.S
1	REHAUSSE FONTE REF. 5009.10.10 ASPHALTE 200X200	70539	2.60 kg	https://www.aco.fr/	ACO S.A.S
1	SIPHON FONTE 200X200 COUVERTURE FONTE SORTIE VERTICALE DN100 M125	305914	12.00 kg	https://www.aco.fr/	ACO S.A.S
1	SIPHON FONTE 200X200 COUVERTURE FONTE SORTIE HORIZONTALE DN100 M125	305915	14.10 kg	https://www.aco.fr/	ACO S.A.S
1	SIPHON FONTE REF. 5009.40.00 COMPLET SORTIE DN100 V	680489	13.50 kg	https://www.aco.fr/	ACO S.A.S
1	SIPHON FONTE ASPHALTE AVEC GRILLE ET PANIER 200X200 - SORTIE HORIZONTALE DN100	681089	21.20 kg	https://www.aco.fr/	ACO S.A.S
1	SIPHON FONTE REF. 5096.00.00 COMPLET G FONTE SORTIE DN100 V	681136	21.20 kg	https://www.aco.fr/	ACO S.A.S