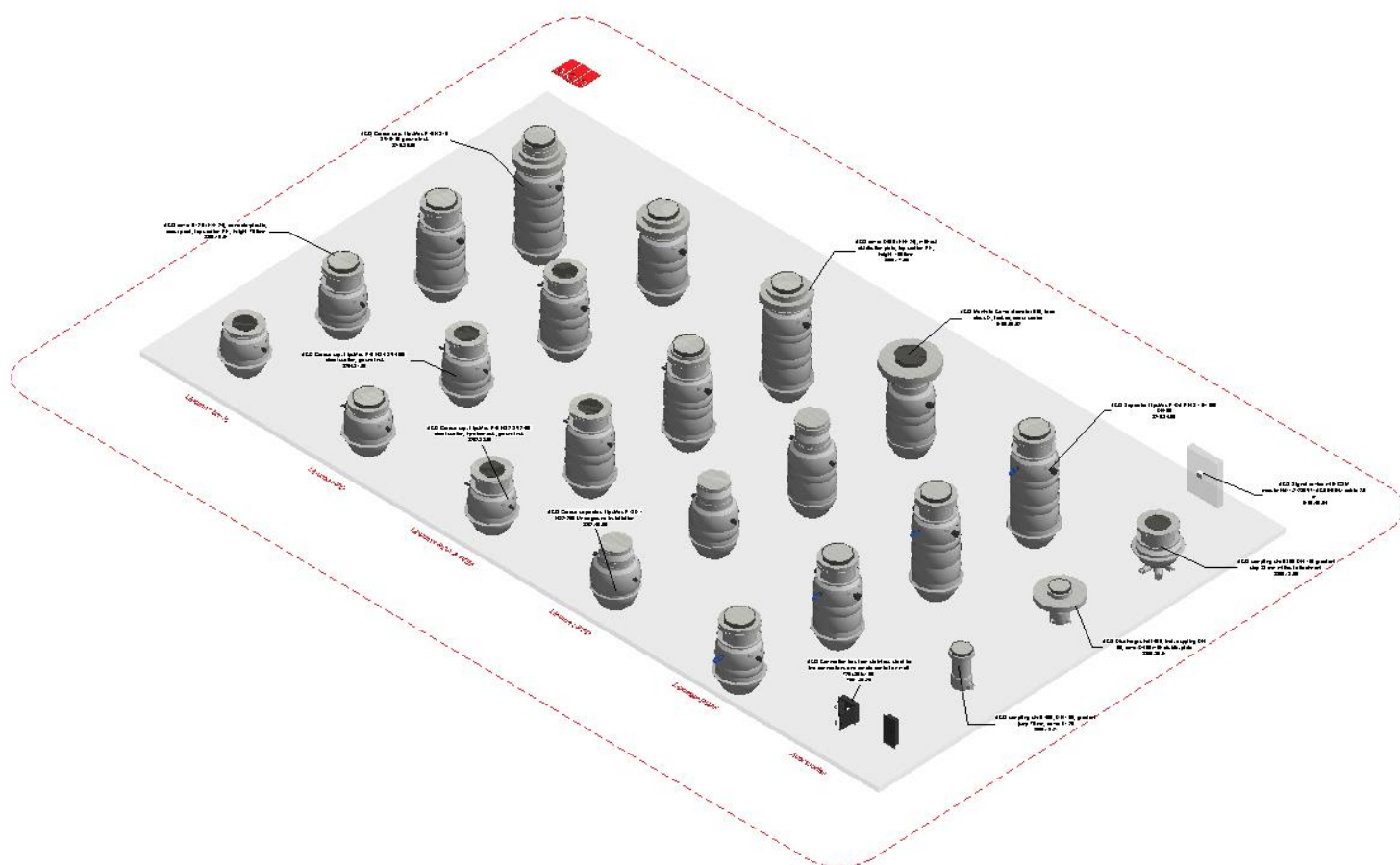


User Guide for Autodesk Revit files

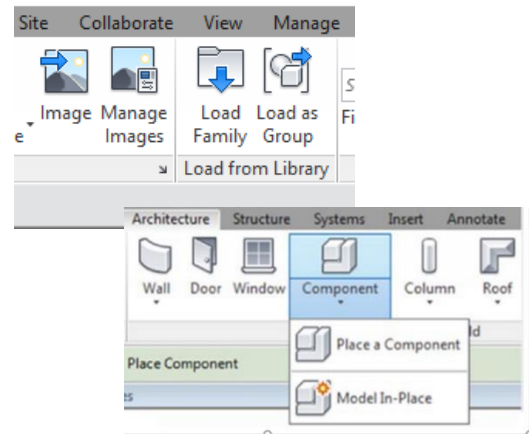
ACO Lipumax are incorporated in a single Revit template along with all accessories. This template includes the following families:

1. Lipumax-P Basic
2. Lipumax-PD
3. Lipumax-PDA & PDM
4. Lipumax-PSD
5. Lipumax-PDAP
6. Accessories



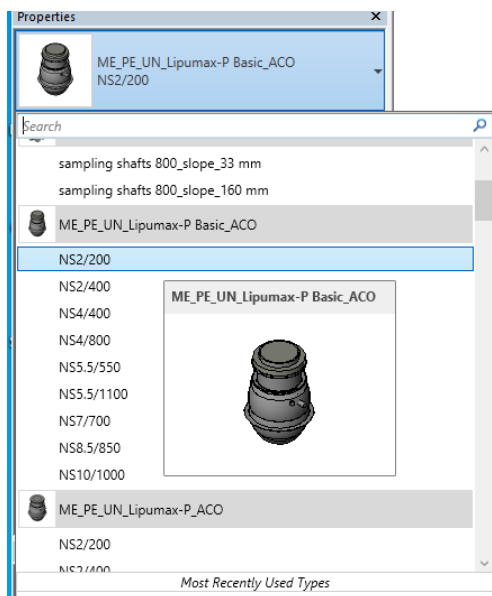
Loading ACO Lipumax -P Basic into the project:

1. Download the ACO Lipumax project file and save it to a suitable location
2. Select any one of the family from ACO Lipumax, Load to your project
3. Navigate to the “Insert” icon on the Revit ribbon and click “Load Family”
4. The file can now be placed into your project. Navigate to the “Architecture/Component” icons on the Revit ribbon and click “Place a Component”



Placing of families

1. Click on the model – At properties tool bar, it will display family name and types, then select the Lipumax variants.



2. **Selection of Top section:** After loading into the project, then the user can select the top section by check in the plastic_topsection or without_plastic_topsection.
To check in the plastic_top_section long: uncheck the plastic_topsection_short and without_plastic_topsection.
height(T)_check warning: user as to select either without_plastic_topsection or plastic_topsection_short otherwise the warning pop up will display in Height(T)_check.



3. **Height adjustment:**

- When user selected without_plastic_topsection: The maximum height and minimum height will be 610mm.
- When user selected plastic_topsection_short: The minimum height will be 945mm and maximum height varies till 1225mm.
- When user selected plastic_topsection_long: The minimum height will be 945mm and maximum height varies till 1980mm.



4. **Selection of Load class:** user can select load class by check in the load_class_A15, load_class_B125 and load_class_D400.

Note:

- To select the load class_D400: uncheck the load_class_A15 and load_class_B125

- The user as to select either load class A15 or load class B125, if not the warning pop up will display in load_class_check.

5. **Selection of Bearing ring:** user can select number of bearings by check in the first position_1_bearing_ring and select remaining bearings if required.

Note:

- Position of bearing 2 and 3 will display only if the position_1_bearing _ring is check.
- User can enter standard bearing height value in the parameter(bearing_1_height).
- Bearing rings will applicable only for B125 load class and D400 load class.

WARNING! (default)	Bearing rings will applicable for B125 and D400	= "Bearing rings will applicable for B125 and D400 lo
position_1_bearing_ring (default)	<input checked="" type="checkbox"/>	=
bearing_ring_1_height (default)	80.0	=
position_2_bearing_ring (default)	<input type="checkbox"/>	=
bearing_ring_2_height (default)	100.0	=
position_3_bearing_ring (default)	<input type="checkbox"/>	=
bearing_ring_3_height (default)	100.0	=

6. **Selection of accessories:** The user can select the accessories such as grease measuring device, cable length, sampling device sealing sleeve.

Mechanical Equipment (1)		Edit Typ
grease_layer_measuring_device	<input type="checkbox"/>	
multipurpose_grease_measuri...	<input type="checkbox"/>	
grease_measuring_device	<input checked="" type="checkbox"/>	
duct_check	-	
cable_length_10m	<input type="checkbox"/>	
cable_length_20m	<input checked="" type="checkbox"/>	
cable_length_30m	<input type="checkbox"/>	
cable_length_check	-	
sampling_device	<input type="checkbox"/>	
sealing_sleeve_1	<input type="checkbox"/>	
sealing_sleeve_2	<input type="checkbox"/>	
sealing_sleeve_3	<input type="checkbox"/>	

7. **Selection of OD and DN:** Finally, user can select the OD and DN options for the outlet pipes.

Loading ACO Lipumax -PD into the project:

The functionality and selection of accessories for Lipumax-PD remains same as Lipumax-P Basic family file.

Loading ACO Lipumax -PDA & PDM into the project:

The functionality and selection of accessories for Lipumax-PDA & PDM remains same as Lipumax-P Basic family file.

Here, user as option to select manual interior cleaning or automatic interior cleaning types.

Loading ACO Lipumax -PSD into the project:

The functionality and selection of accessories for Lipumax-PSD remains same as Lipumax-P Basic family file.

Here, plastic top section will not use in Lipumax PSD

Loading ACO Lipumax -PDAP into the project:

The functionality and selection of accessories for Lipumax-PSD remains same as Lipumax-P Basic family file.

Here, additional lifting pump attached to Lipumax PDAP.

Material Library:

The ACO Lipumax files contain materials that are already pre-loaded into the components. When loading the ACO Lipumax files into your project the pre-loaded materials will automatically transfer through.

Schedules and quantities:

The information such as article number, weight, installation guidelines within the parameters is stored as “shared Parameters” so can easily be appeared when creating a schedule and quantities in the project environment.

ACO					
<Lipumax and accessories>					
A	B	C	D	E	F
Number	Definition	Article Number	GTIN	weight	Technical information
1	ACO remote control Multi-Control	0150.59.89	04002626721044	1.00 kg	https://www.buildingdrainage.aco/products/clean/separator/grease-separator/below-ground-installation/c
1	ACO Signal device with GSM module/NA-1 2/230VV/AC50/60Hz cable 2.5 m	0150.46.94	4002626526229	2.01 kg	https://www.buildingdrainage.aco/products/clean/separator/grease-separator/below-ground-installation/c
2					
1	ACO Frame for on wall connection box 7601.80.24 - HxBxT=565x565x15	7601.80.21	4002626143273	1.17 kg	https://www.buildingdrainage.aco/products/clean/separator/grease-separator/below-ground-installation/c
1	ACO Frame for on wall connection box 7601.80.24 - HxBxT=830x405x30	7601.80.25	4002626789464	2.14 kg	https://www.buildingdrainage.aco/products/clean/separator/grease-separator/below-ground-installation/c
2					
1	ACO Adapter ring for LipuMax PSD	0150.73.62	NA	0.00 kg	https://www.buildingdrainage.aco/products/clean/separator/grease-separator/below-ground-installation/c
1	ACO Cable duct DN100, adaptor 1x7mm, 2x16mm	0150.58.65	4002626779489	1.00 kg	https://www.buildingdrainage.aco/products/clean/separator/grease-separator/below-ground-installation/c
2	ACO Supporting ring from concrete, load class B, height: 60 mm	8700.20.00	4002626298225	50.00 kg	https://www.buildingdrainage.aco/products/clean/separator/grease-separator/below-ground-installation/c
2	ACO Supporting ring from concrete, load class B, height: 80 mm	8700.20.10	4002626298232	60.00 kg	https://www.buildingdrainage.aco/products/clean/separator/grease-separator/below-ground-installation/c
2	ACO Supporting ring from concrete, load class B, height: 100 mm	8700.20.20	4002626298249	70.00 kg	https://www.buildingdrainage.aco/products/clean/separator/grease-separator/below-ground-installation/c
1	ACO Connection box from stainless steel for two connections and remote control on wall 725x300x160	7601.80.20	4002626143266	11.60 kg	https://www.buildingdrainage.aco/products/clean/separator/grease-separator/below-ground-installation/c
1	ACO Connection box from stainless steel for two connections and remote control on wall 725x300x160	7601.80.24	4002626789457	9.50 kg	https://www.buildingdrainage.aco/products/clean/separator/grease-separator/below-ground-installation/c
1	ACO Discharge shaft 450, incl. cuppling DN 65, cover D400 with distrib. plate	3300.30.01	4002626488558	567.21 kg	https://www.buildingdrainage.aco/products/clean/separator/grease-separator/below-ground-installation/c
1	ACO Grease level sensor below ground, cable 10 metres	3300.12.70	4002626777027	6.50 kg	https://www.buildingdrainage.aco/products/clean/separator/grease-separator/below-ground-installation/c
1	ACO Grease sep. LipuMax P-BNS2 SV245L ground inst.	3202.80.00	4002626419071	63.33 kg	https://www.buildingdrainage.aco/products/clean/separator/grease-separator/below-ground-installation/c
1	ACO Grease sep. LipuMax P-BNS4 SV460L ground inst.	3204.80.00	4002626419088	77.33 kg	https://www.buildingdrainage.aco/products/clean/separator/grease-separator/below-ground-installation/c
1	ACO Grease sep. LipuMax P-BNS7 SV730L ground inst.	3207.80.00	4002626419101	116.33 kg	https://www.buildingdrainage.aco/products/clean/separator/grease-separator/below-ground-installation/c
1	ACO Grease sep. LipuMax P-BNS10 SV1010L ground inst.	3210.80.00	4002626467119	130.33 kg	https://www.buildingdrainage.aco/products/clean/separator/grease-separator/below-ground-installation/c
1	ACO Grease sep. LipuMax P-BNS2 SV245L direct suction, ground inst.	3202.81.00	4002626419194	73.99 kg	https://www.buildingdrainage.aco/products/clean/separator/grease-separator/below-ground-installation/c
1	ACO Grease sep. LipuMax P-BNS4 SV460L direct suction, ground inst.	3204.81.00	4002626419200	87.99 kg	https://www.buildingdrainage.aco/products/clean/separator/grease-separator/below-ground-installation/c
2	ACO Grease sep. LipuMax P-BNS5.5 SV570L direct suction, ground inst.	3205.81.00	4002626419217	99.84 kg	https://www.buildingdrainage.aco/products/clean/separator/grease-separator/below-ground-installation/c
1	ACO Separator LipuMax P-DAP NS 4/400 DN100	3204.84.00	4002626905840	249.42 kg	https://www.buildingdrainage.aco/products/clean/separator/grease-separator/below-ground-installation/c
1	ACO Separator LipuMax P-DAP NS 5.5/550 DN150	3205.84.00	4002626905857	264.62 kg	https://www.buildingdrainage.aco/products/clean/separator/grease-separator/below-ground-installation/c
1	ACO Separator LipuMax P-DAP NS 8.5/850 DN150	3208.84.00	4002626905871	289.82 kg	https://www.buildingdrainage.aco/products/clean/separator/grease-separator/below-ground-installation/c
1	ACO Separator LipuMax P-DAP NS 10/1000 DN150	3210.84.00	4002626905888	304.92 kg	https://www.buildingdrainage.aco/products/clean/separator/grease-separator/below-ground-installation/c
1	ACO Grease sep. LipuMax P-BNS2 SV245L direct suction, hp-clean.aut., ground inst.	3202.83.00	4002626419279	126.60 kg	https://www.buildingdrainage.aco/products/clean/separator/grease-separator/below-ground-installation/c
1	ACO Grease sep. LipuMax P-BNS4 SV980L direct suction, hp-clean.man., ground inst.	3204.82.10	4002626420404	129.62 kg	https://www.buildingdrainage.aco/products/clean/separator/grease-separator/below-ground-installation/c
1	ACO Grease sep. LipuMax P-BNS7 SV730L direct suction, hp-clean.aut., ground inst.	3207.83.00	4002626419309	177.13 kg	https://www.buildingdrainage.aco/products/clean/separator/grease-separator/below-ground-installation/c
1	ACO Grease sep. LipuMax P-BNS10 SV1010L direct suction, hp-clean.man., ground inst.	3210.82.00	4002626467133	166.69 kg	https://www.buildingdrainage.aco/products/clean/separator/grease-separator/below-ground-installation/c
1	ACO Grease separator. LipuMax P-SD - NS2/200 Underground installation	3202.40.00	4002626870728	61.62 kg	https://www.buildingdrainage.aco/products/clean/separator/grease-separator/below-ground-installation/c
1	ACO Grease separator. LipuMax P-SD - NS2/400 Underground installation	3202.40.10	4002626835109	75.81 kg	https://www.buildingdrainage.aco/products/clean/separator/grease-separator/below-ground-installation/c
1	ACO Grease separator. LipuMax P-SD - NS4/800 Underground installation	3204.40.10	4002626871312	95.21 kg	https://www.buildingdrainage.aco/products/clean/separator/grease-separator/below-ground-installation/c
1	ACO Grease separator. LipuMax P-SD - NS5.5/500 Underground installation	3205.40.00	4002626871329	94.41 kg	https://www.buildingdrainage.aco/products/clean/separator/grease-separator/below-ground-installation/c
1	ACO load distribution plate made of concrete for Lipumax PSD load class D400	0178.07.67	NA	0.00 kg	https://www.buildingdrainage.aco/products/clean/separator/grease-separator/below-ground-installation/c
1	ACO Manhole Cover diameter 600, load class D, locked, odour sealed	0150.69.52	4002626809827	111.00 kg	https://www.buildingdrainage.aco/products/clean/separator/grease-separator/below-ground-installation/c
1	ACO Manhole Cover diameter 600, load class B, locked, odour sealed	0150.72.72	4002626914453	63.00 kg	https://www.buildingdrainage.aco/products/clean/separator/grease-separator/below-ground-installation/c